

# LIGHT ACADEMY SECONDARY SCHOOL

## S.1 BIOLOGY

# Chapter 1: Introduction to Biology

1. Use the picture below to answer the following questions.



- a) Identify the organisms in the above diagram.
- b) With reasons, identify the life processes carried out by the above organisms.
- c) How is the above life process beneficial to the above organisms

- a) Give any other life processes apart from those demonstrated above in the diagram with their importance.
- b) Do plants and animals carry out ALL the life processes in the same way, elaborate by comparison.

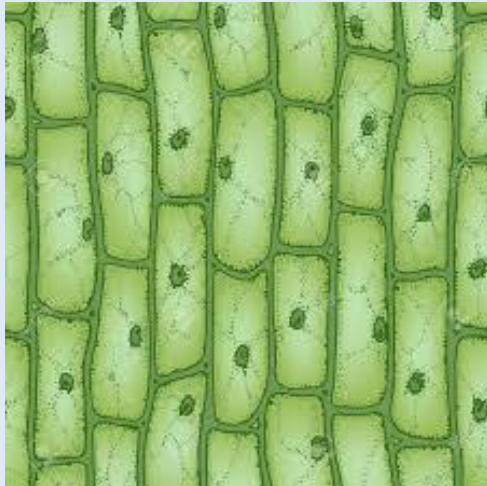
You are in a community around a grassland. There is a lioness which always come at night and attack the livestock of the locals. The locals are planning to attack and kill the lioness because they are fade up with the losses. You are a Biologist who is interested in conservation, prepare to sensitize the angry community and give them measures of how to deal with this challenge



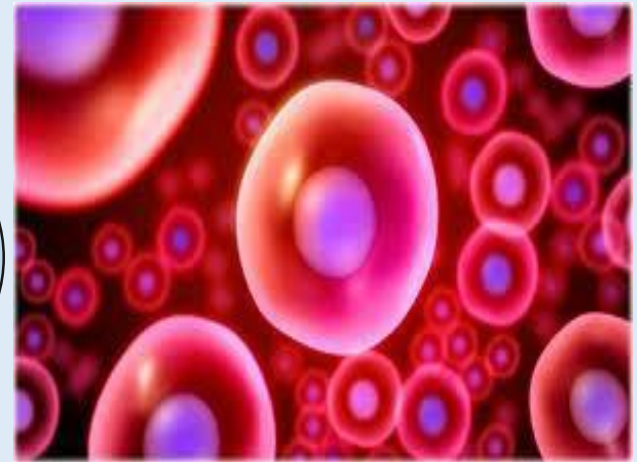
# Chapter 2: Cells

- Use the pictures below to answer the following questions

A.



B.



The above are as observed under a microscope and they are very important to life.

Identify the above biological structures

Draw a single unit from each of the pictures. Do not label.

Identify the similarities and differences between a single unit of 1 and 2

The work is to be done in  
one week's period.

Stay home  
Stay safe  
Wash your hands

